

PHYSIOLOGICAL, MORPHOLOGICAL AND PHYTOCHEMICAL RESPONSES OF MAIZE TO ABIOTIC RESPONSES

ASHRAF M*

Department of Plant Breeding and Genetics, Faculty of Agricultural Sciences, University of the Punjab
P.O.Box.54590, Lahore, Pakistan

*Correspondence author email address: muzammilashraf9095140@gmail.com

(Received, 14th January 2023, Revised 8th December 2023, Published 16th December 2023)

Abstract This review paper thoroughly analyses maize's morphological, physiological, and phytochemical responses to different abiotic stressors. As a staple cereal crop of global importance, maize has several challenges that significantly impact its growth and yield, including salinity, drought, and extreme temperatures. Climate change will generally impact plants' abiotic stress tolerance mechanisms, and maize specifically, despite many unanswered questions. Despite this, it is still impossible to draw wide conclusions because plants react differently to various stresses at different times. The review synthesizes current knowledge on the morphological adaptations, encompassing changes in root architecture and leaf morphology, as strategies maize employs to navigate adverse environmental conditions. Additionally, the article examines the physiological responses of maize, shedding light on mechanisms that enhance stress tolerance, including adjustments in water use efficiency, pH and the activation of cellular protective pathways. Furthermore, the review delves into the dynamic alterations in phytochemical profiles, highlighting maize's capacity to synthesize secondary metabolites as part of its adaptive arsenal. This comprehensive exploration of maize's responses to abiotic stressors contributes valuable insights for researchers, breeders, and policymakers working towards developing resilient maize varieties and sustainable agricultural practices in an ever-changing environment.

[Citation: Ashraf, M. (2023). Physiological, morphological and phytochemical responses of maize to abiotic responses. J. Life Soc. Sci, 2023: 18]

Keywords: Maize; Abiotic stress; climate change; drought; salt; heat

Introduction

Crops provide 80% of humans' food, with cereals making up half of the world's food production. (Langridge and Fleury, 2011; Salika and Riffat, 2021). A major annual cereal crop in the world, Zea mays L., also called corn or maize, is a member of the family Poaceae (Rouf Shah et al., 2016). Maize (*Zea mays* L.) originated between 7,000 and 10,000 years ago from the teosinte (*Zea mays* L. spp Mexicana) in the Western Hemisphere (García-Lara and Serna-Saldivar, 2019). Native Americans grew maize on a large scale (For example, in North Dakota, it was the first crop) (Benson, 2011; Hallauer and Carena, 2009) in the United States between 1600 and 1700 (Hallauer and Carena, 2009). Maize (*Zea mays* L.) is grown worldwide in diverse environments (Du Plessis, 2003). After wheat and rice, maize is The world's most significant cereal crop (Panda, 2010). Corn is called the "Queen of Cereals" due to its high productivity (Kiran et al., 2018; Lone et al., 2021; Sravani et al., 2021). The main purposes of maize cultivation are grain, fodder, industrial processes, and various other products (Abdelaziz, 2020; Dinesh et al.,

2018; Panda, 2010). Maize is a renewable fossil fuel substitute due to bioethanol production (Mohapatra et al., 2019; Zabed et al., 2017). Comprehending the effects of climate change on this staple crop's development and growth is essential to understanding maize yield. Abiotic stressors, including salinity, nutrient shortage, temperature extremes, and drought, are considered fundamental components of the environment that reduce the overall production of maize. According to recent research, the two most significant climate variables are temperature and precipitation; radiation is another important factor influencing its yield (Salika and Riffat, 2021; Xu et al., 2016).

Recently, extremes in temperature, droughts and waterlogging have significantly decreased maize growth and yield (Ahuja et al., 2010; Prasanna, 2016; Ren et al., 2014). 25–30% of maize is lost because of drought or waterlogging (Kaur et al., 2021; Lone et al., 2018; Srivastava et al., 2010). Mostly used in poultry diets across the globe, including India, it is the source of energy because of its high energy content,

palatability, pigment content, and essential fatty acid content. Eggs yolks, poultry fat, and skin are naturally colored yellow, so yellow-kerneled cultivars are the best choice for feeding chickens because they are abundant in β -carotenes and xanthophylls (Kaul et al., 2019). Effective global measures must be implemented to enhance the yield per hectare of highly demanded crops and develop crops that are tolerant of harsh environmental circumstances. Maize is the most sought-after crop because it can be cultivated into sophisticated and resilient varieties to address the issues with global food security (Vinocur and Altman, 2005). To meet the demands of the expanding human population and adapt to the current climatic conditions, maize varieties must have improved resistance to abiotic stresses, particularly those related to heat and drought (Salika and Riffat, 2021). This means that the main focus of the current study will be on how maize responds to various abiotic stresses and climate change in terms of morphology, physiology, and photochemistry. Maize contains fat 4.57g (Ujong et al., 2023), protein 8.84% (Mandal et al., 2023), fiber 2.15g (Alexandru et al., 2023), carbohydrates 71.88g (Bariw et al., 2020; Ujong et al., 2023), moisture 10.23% (Bariw et al., 2020), ash 2.33% (Tankem et al., 2023), phosphorus 0.348g (Mandal et al., 2023) and minerals 1.5g (Abbas et al., 2021; Rouf Shah et al., 2016).

Zea mays and Abiotic stress

Annual crop grain yields are decreasing globally at an accelerated rate due to abiotic stressors like drought

and nutrient shortages (Hossain et al., 2021; Mueller et al., 2012). When analyzing how climate change affects crops, maize is most adversely affected (Bassu et al., 2014; Kang et al., 2009; Khan et al., 2019). The main environmental disturbances that harm global maize production are salinity, nutrient shortages, droughts, and extremely high or low temperatures (Ahuja et al., 2010; Salika and Riffat, 2021). Furthermore, some studies suggest that as temperatures rise in the world's major corn-producing regions, the maturity period may shorten (Sánchez et al., 2014; Zhao et al., 2017). While rising temperatures may cause changes in metabolism that result in a decrease in the absorption of carbon, which in turn causes a decline in pollination and grain set (Moriondo et al., 2011). The severe climate change scenario is expected to reduce corn yields by 10–20% by the end of the 21st century, even when maize receives all the water it requires (Xu et al., 2016). Simultaneously, world's agricultural system needs to produce 70% of the food required to feed a world population expected to reach 9 billion by 2050 (Rahman, 2016; Searchinger et al., 2014). Therefore, plant breeders continue to develop crops with more yield security in recent production systems, such as corn, by using genetic concepts and biotechnology techniques (Habben et al., 2014). All possible responses that corn might have to different abiotic stressors are listed in Figure 1.

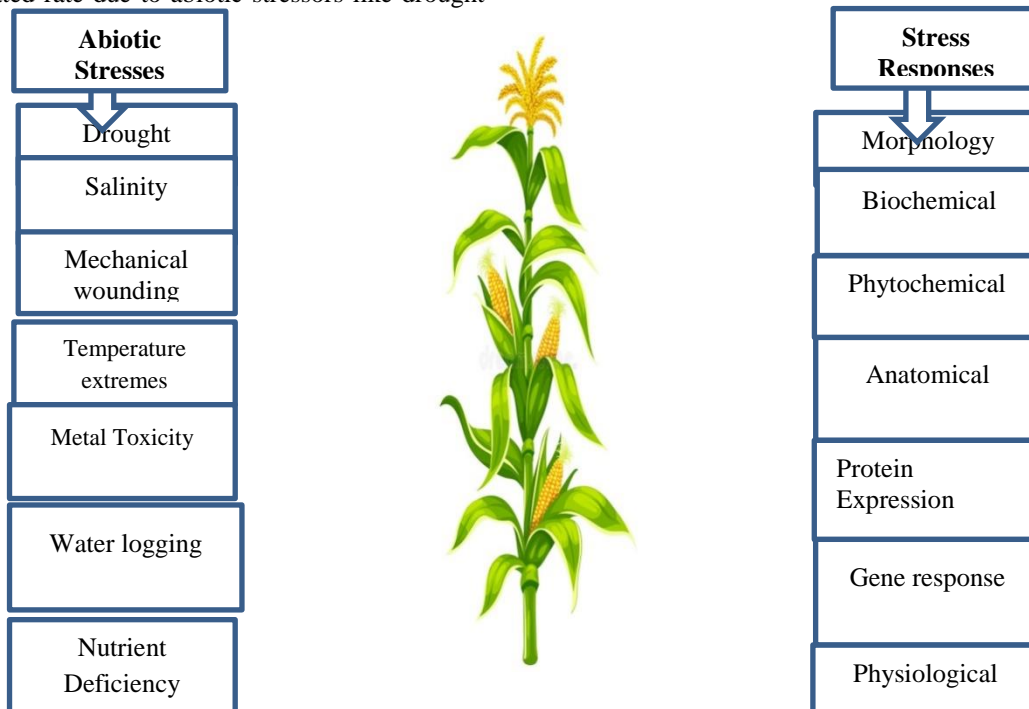


Figure: 1 Features of Abiotic Stressors in Maize and Their Reactions

Responses of the Maize Morphology to the Abiotic Stress

More diverse morphogenic responses are seen in plants in response to abiotic stressors (Potters et al., 2007). Because of its poorly developed root system

and larger transpiration surface area, maize is generally thought to have poor drought tolerance (Camacho and Caraballo, 1994). The maize plant's aerial section exhibited most of its responses to the combined abiotic stress (Vescio et al., 2020) and its

reproductive organs, most likely with the intention of breeding. To our knowledge, no data is accessible regarding how the combined heat stress and drought affect the maize root system (Hu et al., 2015). Considering that individual types of maize roots, including nodal and lateral postembryonic roots, and primary and seminal embryonic roots (Hochholdinger et al., 2018), have different reactions to external stimuli and may serve as a "source" for stress adaptation. Different responses of the different kinds of roots to drought stress (Hund et al., 2008; Zhan et al., 2015), allelochemicals (Abenavoli et al., 2004; Lupini et al., 2016), Phosphorus deficiency (Rubio et al., 2004), and to the combined drought stress and N deficiency reported (Lynch, 2013). While the plant's ability to control leaf growth is maintained in natural conditions by inadequate root development, which is highly correlated with soil temperature, the rate of leaf appearance under cold stress was found to be roughly three times slower than that of maize grown at normal temperature (Farooq et al., 2009).

It has been noted that there is no discernible decrease in root growth in maize under water stress (Cai et al., 2017), larger root lengths (Ali, 2016) and with smaller lateral roots in maize that is more resistant to drought (Ali et al., 2017; Cai et al., 2017). When a drought occurs, maize plants frequently adapt their root architecture to search for water in deeper soil layers (Hammer et al., 2009). Knowing better about the changes in the root dimensions that occur during droughts or any other type of stress is important. Hybrid maize seedlings under low-temperature stress exhibit markedly altered root morphology, with larger seminal roots, thicker axes, and swollen roots behind the tip (Farooq et al., 2009). decrease in growth parameters, including plant height, photosynthesis, and fresh and dry shoot weight (Ali et al., 2015; Aslam et al., 2013). Changes in maize leaf morphology due to high temperatures include a reduction in leaf size and shape (Ong and Baker, 1985). The weight of maize seedlings is decreased by osmotic stress (Moharramnejad et al., 2015). Crop yield losses are the direct or indirect result of all these detrimental effects on the morphology of the maize plant. Grain yield decreased when maize plants were subjected to water deficit conditions for longer than 12 days during grain filling and flowering (Li et al., 2018; Mangani et al., 2018). Additionally, during chilling, it has been discovered that significant alterations in tassel morphogenesis, as well as a reduction in the number of spikelet pairs and tassel branches, occur in maize, which results in losses in grain yield (Salika and Riffat, 2021; Thakur et al., 2010).

Responses of Maize Physiology to Abiotic Stress

There are wide differences in how low temperatures affect corn physiology (Wijewardana et al., 2016). Thermal thresholds for the ideal morphological development or physiological and biochemical activity in maize decrease metabolic and growth

processes, damaging cells and tissues and reducing the genetically determined yield potential (Ali et al., 2013; Ali et al., 2016; Ali et al., 2010a; Cairns et al., 2012; Farooq et al., 2009). Within corn, A decrease in turgor pressure and cell elongation can result from dehydration of the cells (Kutschera and Niklas, 2013). Osmotic stress caused by salinity in maize can alter the plant's ability to move water (Farooq et al., 2015). Furthermore, changes in pH are caused by low temperatures across thylakoid membranes (Pasini et al., 2005). However, it was shown in a previous study that When an artificial electron acceptor was used to penetrate the leaves of maize, the light reaction of photosynthesis was unaffected by temperature (Fracheboud and Leipner, 2003; Salika and Riffat, 2021). In corn, Damage to cellular membranes can result from high temperatures (Ali et al., 2011; Ali et al., 2014; Ali and Malik, 2021; Tiwari and Yadav, 2019). Adding different kinds of suitable organic solvents is another important and widespread physiological stress response in plants (Bohnert and Shen, 1998). According to earlier research, a few solutes, including glycine betaine, sorbitol, mannitol, proline, and trehalose, function as osmoprotectants in water-stressed environments and support plant growth and development (Hadiarto and Tran, 2011; Slama et al., 2015). Maize may change metabolism to deal with stressful situations (Ali et al., 2010b; Iqra et al., 2020; Ramazan et al., 2022). Maize activates antioxidant systems to prevent cellular damage and scavenge reactive oxygen species (ROS) (Majid et al., 2017; Naveed et al., 2012; Prasad, 1996; Sarwar et al., 2021). For maize seedlings to adapt to oxidative stress brought on by chilling, they must be able to increase the synthesis and activity of various antioxidant enzymes, such as catalase (CAT), peroxidases (POD), and superoxide dismutase (SOD) (Hussain et al., 2020). In maize, osmoprotectants such as proline can accumulate to maintain cellular turgor and prevent dehydration (Zulfiqar et al., 2020). Additionally, abscisic acid (ABA), one of the plant growth regulators necessary for the plant's reaction to drought stress, is more abundant under osmotic stress (Muhammad Aslam et al., 2022; Rajasheker et al., 2019; Sarwar et al., 2022). However, Plant growth regulators are widely acknowledged to communicate and affect one another, and that interaction is necessary for plants to resist abiotic stress. Therefore, more research is required to understand the various plant growth regulators that completely enhance maize's resistance to abiotic stress.

Response of maize phytochemicals to abiotic stressors

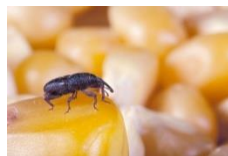
Plants naturally contain bioactive chemicals called phytochemicals, which are good for human health and may reduce the chance of developing severe chronic illnesses (Xiao and Bai, 2019). Maize is an essential source of several significant phytochemicals, such as phytosterols, phenolic compounds, and carotenoids (MANN; Saeed and Saeed, 2020; Serna-

[Saldivar et al., 2015](#); [Zubair et al., 2016](#)). Climate factors also influence the amount and make-up of protective phytochemicals, critical for resistance to biotic and abiotic stressors([Vaughan et al., 2018](#)). Maize produces a range of resilience compounds in response to environmental stimuli, including flavonoids, cell wall components like lignin, and defense-related proteins([Vaughan et al., 2018](#)). In addition to age and plant organ variation, benzoxazinoid concentration and composition amongst maize genotypes are also affected by weather patterns linked to climate change([Cambier et al., 2000](#); [Salika and Riffat, 2021](#)). It is well known that warmer temperatures promote maize growth and development([Sunoj et al., 2016](#)), which might inadvertently alter the concentration of benzoxazinoid in maize tissues. Moreover, it is commonly recognized that the amount of nitrogen in the soil has a major influence on the potential for benzoxazinoid production ([Brevik, 2013](#)). It is believed that temperature, soil moisture, humidity, and light intensity are all factors in creating volatile organic compounds (VOCs) in maize. It's interesting to note that when soil moisture content varies, maize releases volatiles. Additionally, plants release more volatiles into dry soil than wet soil([Gouinguéné and Turlings, 2002](#)). A recent review provided detailed information on the possible impacts of climate change on the production of volatile organic compounds (VOCs) from various plant sources([Peñuelas and Staudt, 2010](#)). An interaction between ethylene and jasmonic acid (JA) results in an elevated rate of terpenoid phytoalexin biosynthesis in maize stalks([Liu et al., 2023](#)). Still, in maize roots, it is induced by applying ABA exclusively to the underground portions ([Salika and Riffat, 2021](#)), demonstrating the diverse regulatory mechanisms across the different plant organs. It has been demonstrated that the buildup of terpenoid phytoalexins in maize is impacted by both drought and elevated [CO₂] ([Vaughan et al., 2015](#); [Vaughan et al., 2016](#)) Moreover, the production of salicylic acid (SA) and JA is compromised when maize plants grow at high [CO₂] levels([Tahjib-Ul-Arif et al., 2018](#); [Wani et al., 2017](#)). Furthermore, further study is required to fully understand the intricate processes by which crop plants produce volatile organic compounds (VOCs) in reaction to

various stressors. This scenario occurs frequently in nature.

Abiotic stress coupled with climate change: A problem for maize

Plant growth, development, and productivity can be adversely influenced by non-living environmental elements known as abiotic stresses([Mosa et al., 2017](#)). Increasing temperatures due to climate change can lead to heat stress, adversely affecting maize growth([Deryng et al., 2014](#)); the overall yield of maize, the development of kernels, and the success of pollination during the reproductive stage can all be negatively impacted by high temperatures([Wang et al., 2021](#)). Frost can harm immature plants and develop tassels in maize, which lowers yield([Miedema, 1982](#)). Maize is sensitive to dehydration, and inadequate water availability during critical growth stages can reduce yields ([Comas et al., 2019](#); [Jain et al., 2019](#)). Storms, hurricanes, and floods are more frequent and powerful climate events that can harm maize crops, resulting in lower yields and a higher vulnerability to disease ([Elias et al., 2019](#)). Abiotic stressors include high concentrations of ultraviolet B and ultraviolet A radiation, temperature extremes, Water as a drought-causing stressor, submergence and flooding, massive concentrations of Na⁺, sharp variations in the amount of essential nutrients, air pollutants (ozone, sulfur dioxide) that cause salt stress, mechanical stressors, heavy metal presence, and other less frequent variables, as well as chemical stressors like acidic pH ([Suzuki et al., 2014](#)). Abiotic stress has been shown to significantly affect crop productivity in the last few decades, both in terms of frequency and intensity, in addition to extreme weather ([Venkateswarlu and Shanker, 2011](#)). Climate change will, as expected, have the greatest effect on crop productivity and agricultural wealth; this impact will particularly noticeable in developing nations situated at lower latitudes([Wheeler and Von Braun, 2013](#)). Therefore, It is necessary to develop pathogen-resistant and climate-resilient varieties of maize to meet the increasing demands of the world's expanding human population. Here are some types of biotic and abiotic stress that impact maize productivity.



Weevil



Aflatoxin maize



Sugarcane Mosaic



Drought



Bacterial stalk rot



Ear Rot



Leaf Blight



High temperature



Corn Borer



Flooding

Fig. 3 Stress factors, both biotic and abiotic, that affect maize productivity**Conclusion**

Climate plays a significant impact on plant growth and agricultural productivity. A suitable climate is necessary to ensure proper soil moisture levels during these periods, as maize is especially sensitive to water stress. The morphological, physiological, and phytochemical reactions of maize to abiotic stressors highlight the morphological changes that have been noticed, such as adjustments to leaf morphology and root architecture in response to environmental stresses. Physiological responses demonstrate the plant's resistance to unfavorable circumstances. These responses include modifications to pH, water use efficiency, and stress tolerance mechanisms. Moreover, the modulation of phytochemical profiles in the crop reveals maize's ability to produce secondary metabolites as a defense mechanism against abiotic stressors. Therefore, to protect and improve maize productivity and the economy in the future, a thorough understanding of maize's various morphological, physiological, and biochemical responses to one or more abiotic stresses concerning climatic fluctuations is required. Furthermore, it is necessary to comprehend several other significant uncertainties, such as canopy and CO₂ effects. This thorough review would give the scientific community a better perspective for upcoming research aimed at producing maize at the commercial and industrial scale in both quality and quantity efficiently and sustainably.

References

- Abbas, M., Abdel-Lattif, H., and Shahba, M. (2021). Ameliorative effects of calcium sprays on yield and grain nutritional composition of maize (*Zea mays* L.) cultivars under drought stress. *Agriculture* **11**, 285.
- Abdelaziz, T. A. M. (2020). Effects of different fertilizers on growth and yield components of

Maize (*Zea mays* L.), Sudan University of Science & Technology.

- Abenavoli, M. R., Sorgonà, A., Albano, S., and Cacco, G. (2004). Coumarin differentially affects the morphology of different root types of maize seedlings. *Journal of Chemical Ecology* **30**, 1871-1883.
- Ahuja, I., de Vos, R. C., Bones, A. M., and Hall, R. D. (2010). Plant molecular stress responses face climate change. *Trends in plant science* **15**, 664-674.
- Alexandru, B., VÂRBAN, M. M. D. D. I., Vârban, R., Moldovan, C., and Muntean, S. Maize (*zea mays*), a prospective medicinal plant in romania.
- Ali, F., Ahsan, M., Ali, Q., and Kanwal, N. (2017). Phenotypic stability of *Zea mays* grain yield and its attributing traits under drought stress. *Frontiers in plant science* **8**, 1397.
- Ali, F., Kanwal, N., Ahsan, M., Ali, Q., Bibi, I., and Niazi, N. K. (2015). Multivariate analysis of grain yield and its attributing traits in different maize hybrids grown under heat and drought stress. *Scientifica* **2015**.
- Ali, M. L. (2016). Screening genetic variation in maize for deep root mass in greenhouse and its association with grain yield under water-stressed field conditions. *Maydica* **60**, 1-13.
- Ali, Q., Ahsan, M., Ali, F., Aslam, M., Khan, N. H., Munzoor, M., Mustafa, H. S. B., and Muhammad, S. (2013). Heritability, heterosis and heterobeltiosis studies for morphological traits of maize (*Zea mays* L.) seedlings. *Advancements in Life sciences* **1**.
- Ali, Q., Ahsan, M., Kanwal, N., Ali, F., Ali, A., Ahmed, W., Ishfaq, M., and Saleem, M. (2016). Screening for drought tolerance: comparison of maize hybrids under water deficit condition. *Advancements in Life Sciences* **3**, 51-58.

- Ali, Q., Ahsan, M., and Saleem, M. (2010a). Genetic variability and trait association in chickpea (*Cicer arietinum* L.). *Electronic Journal of Plant Breeding* **1**, 328-333.
- Ali, Q., Ahsan, M., Tahir, M. H. N., Elahi, M., Farooq, J., Waseem, M., and Sadique, M. (2011). Genetic variability for grain yield and quality traits in chickpea. *International Journal of Agro-Veterinary and Medical Sciences* **5**, 201-208.
- Ali, Q., Ali, A., Ahsan, M., Nasir, I. A., Abbas, H. G., and Ashraf, M. A. (2014). Line× Tester analysis for morpho-physiological traits of *Zea mays* L seedlings. *Advancements in Life sciences* **1**, 242-253.
- Ali, Q., and Malik, A. (2021). Genetic response of growth phases for abiotic environmental stress tolerance in cereal crop plants. *Genetika* **53**, 419-456.
- Ali, Q., Muhammad, A., and Farooq, J. (2010b). Genetic variability and trait association in chickpea (*Cicer arietinum* L.) genotypes at seedling stage. *Electronic Journal of Plant Breeding* **1**, 334-341.
- Aslam, M., Ibni Zamir, M. S., Afzal, I., and Yaseen, M. (2013). Morphological and physiological response of maize hybrids to potassium application under drought stress. *Journal of Agricultural Research (03681157)* **51**.
- Bariw, S. A., Kudadze, S., and Adzawla, W. (2020). Prevalence, effects and management of fall army worm in the Nkoranza South Municipality, Bono East region of Ghana. *Cogent Food & Agriculture* **6**, 1800239.
- Bassu, S., Brisson, N., Durand, J. L., Boote, K., Lizaso, J., Jones, J. W., Rosenzweig, C., Ruane, A. C., Adam, M., and Baron, C. (2014). How do various maize crop models vary in their responses to climate change factors? *Global change biology* **20**, 2301-2320.
- Benson, L. V. (2011). Factors controlling Pre-Columbian and early historic maize productivity in the American Southwest, part 1: The southern Colorado Plateau and Rio Grande regions. *Journal of Archaeological Method and Theory* **18**, 1-60.
- Bohnert, H. J., and Shen, B. (1998). Transformation and compatible solutes. *Scientia horticulturae* **78**, 237-260.
- Brevik, E. C. (2013). The potential impact of climate change on soil properties and processes and corresponding influence on food security. *Agriculture* **3**, 398-417.
- Cai, Q., Zhang, Y., Sun, Z., Zheng, J., Bai, W., Zhang, Y., Liu, Y., Feng, L., Feng, C., and Zhang, Z. (2017). Morphological plasticity of root growth under mild water stress increases water use efficiency without reducing yield in maize. *Biogeosciences* **14**, 3851-3858.
- Cairns, J. E., Sonder, K., Zaidi, P., Verhulst, N., Mahuku, G., Babu, R., Nair, S., Das, B., Govaerts, B., and Vinayan, M. (2012). Maize production in a changing climate: impacts, adaptation, and mitigation strategies. *Advances in agronomy* **114**, 1-58.
- Camacho, R., and Caraballo, D. (1994). Evaluation of morphological characteristics in Venezuelan maize (*Zea mays* L.) genotypes under drought stress. *Scientia Agricola* **51**, 453-458.
- Cambier, V., Hance, T., and de Hoffmann, E. (2000). Variation of DIMBOA and related compounds content in relation to the age and plant organ in maize. *Phytochemistry* **53**, 223-229.
- Comas, L. H., Trout, T. J., DeJonge, K. C., Zhang, H., and Gleason, S. M. (2019). Water productivity under strategic growth stage-based deficit irrigation in maize. *Agricultural water management* **212**, 433-440.
- Deryng, D., Conway, D., Ramankutty, N., Price, J., and Warren, R. (2014). Global crop yield response to extreme heat stress under multiple climate change futures. *Environmental Research Letters* **9**, 034011.
- Dinesh, M. V., Simon, S., and Nagar, S. (2018). Biorational management of stem borer, *Chilo partellus* in maize. *Journal of Pharmacognosy and Phytochemistry* **7**, 1142-1145.
- Du Plessis, J. (2003). "Maize production," Department of Agriculture Pretoria, South Africa.
- Elias, E. H., Flynn, R., Idowu, O. J., Reyes, J., Sanogo, S., Schutte, B. J., Smith, R., Steele, C., and Sutherland, C. (2019). Crop vulnerability to weather and climate risk: Analysis of interacting systems and adaptation efficacy for sustainable crop production. *Sustainability* **11**, 6619.
- Farooq, M., Aziz, T., Wahid, A., Lee, D.-J., and Siddique, K. H. (2009). Chilling tolerance in maize: agronomic and physiological approaches. *Crop and Pasture Science* **60**, 501-516.
- Farooq, M., Hussain, M., Wakeel, A., and Siddique, K. H. (2015). Salt stress in maize: effects, resistance mechanisms, and management. A review. *Agronomy for Sustainable Development* **35**, 461-481.
- Fracheboud, Y., and Leipner, J. (2003). The application of chlorophyll fluorescence to study light, temperature, and drought stress. In "Practical applications of chlorophyll fluorescence in plant biology", pp. 125-150. Springer.
- García-Lara, S., and Serna-Saldivar, S. O. (2019). Corn history and culture. *Corn*, 1-18.
- Gouinguéné, S. P., and Turlings, T. C. (2002). The effects of abiotic factors on induced volatile emissions in corn plants. *Plant physiology* **129**, 1296-1307.

- Habben, J. E., Bao, X., Bate, N. J., DeBruin, J. L., Dolan, D., Hasegawa, D., Helentjaris, T. G., Lafitte, R. H., Lovan, N., and Mo, H. (2014). Transgenic alteration of ethylene biosynthesis increases grain yield in maize under field drought-stress conditions. *Plant biotechnology journal* **12**, 685-693.
- Hadiarto, T., and Tran, L.-S. P. (2011). Progress studies of drought-responsive genes in rice. *Plant cell reports* **30**, 297-310.
- Hallauer, A. R., and Carena, M. J. (2009). "Maize," Springer.
- Hammer, G. L., Dong, Z., McLean, G., Doherty, A., Messina, C., Schussler, J., Zinselmeier, C., Paszkiewicz, S., and Cooper, M. (2009). Can changes in canopy and/or root system architecture explain historical maize yield trends in the US corn belt? *Crop Science* **49**, 299-312.
- Hochholdinger, F., Yu, P., and Marcon, C. (2018). Genetic control of root system development in maize. *Trends in plant science* **23**, 79-88.
- Hossain, A., Skalicky, M., Brestic, M., Maitra, S., Ashrafal Alam, M., Syed, M. A., Hossain, J., Sarkar, S., Saha, S., and Bhadra, P. (2021). Consequences and mitigation strategies of abiotic stresses in wheat (*Triticum aestivum* L.) under the changing climate. *Agronomy* **11**, 241.
- Hu, X., Wu, L., Zhao, F., Zhang, D., Li, N., Zhu, G., Li, C., and Wang, W. (2015). Phosphoproteomic analysis of the response of maize leaves to drought, heat and their combination stress. *Frontiers in plant science* **6**, 298.
- Hund, A., Fracheboud, Y., Soldati, A., and Stamp, P. (2008). Cold tolerance of maize seedlings as determined by root morphology and photosynthetic traits. *European Journal of Agronomy* **28**, 178-185.
- Hussain, H. A., Men, S., Hussain, S., Zhang, Q., Ashraf, U., Anjum, S. A., Ali, I., and Wang, L. (2020). Maize tolerance against drought and chilling stresses varied with root morphology and antioxidative defense system. *Plants* **9**, 720.
- Iqra, L., Rashid, M. S., Ali, Q., Latif, I., and Maik, A. (2020). Evaluation for Na⁺/K⁺ ratio under salt stress condition in wheat. *Life Sci J* **17**, 43-47.
- Jain, M., Kataria, S., Hirve, M., and Prajapati, R. (2019). Water deficit stress effects and responses in maize. *Plant Abiotic Stress Tolerance: Agronomic, Molecular and Biotechnological Approaches*, 129-151.
- Kang, Y., Khan, S., and Ma, X. (2009). Climate change impacts on crop yield, crop water productivity and food security—A review. *Progress in natural Science* **19**, 1665-1674.
- Kaul, J., Jain, K., and Olakh, D. (2019). An overview on role of yellow maize in food, feed and nutrition security. *International Journal of Current Microbiology and Applied Sciences* **8**, 3037-3048.
- Kaur, G., Vikal, Y., Kaur, L., Kalia, A., Mittal, A., Kaur, D., and Yadav, I. (2021). Elucidating the morpho-physiological adaptations and molecular responses under long-term waterlogging stress in maize through gene expression analysis. *Plant Science* **304**, 110823.
- Khan, A., Ali, S., Shah, S. A., Khan, A., and Ullah, R. (2019). Impact of climate change on maize productivity in Khyber Pakhtunkhwa, Pakistan. *Sarhad Journal of Agriculture* **35**, 594-601.
- Kiran, A., Umesh, K., and Shankara, M. (2018). Growth and Instability in Agriculture-A case of maize production in India.
- Kutschera, U., and Niklas, K. J. (2013). Cell division and turgor-driven stem elongation in juvenile plants: a synthesis. *Plant Science* **207**, 45-56.
- Langridge, P., and Fleury, D. (2011). Making the most of 'omics' for crop breeding. *Trends in biotechnology* **29**, 33-40.
- Li, Y., Tao, H., Zhang, B., Huang, S., and Wang, P. (2018). Timing of water deficit limits maize kernel setting in association with changes in the source-flow-sink relationship. *Frontiers in plant science* **9**, 1326.
- Liu, M., Sui, Y., Yu, C., Wang, X., Zhang, W., Wang, B., Yan, J., and Duan, L. (2023). Coronatine-Induced Maize Defense against Gibberella Stalk Rot by Activating Antioxidants and Phytohormone Signaling. *Journal of Fungi* **9**, 1155.
- Lone, A. A., Dar, Z. A., Gull, A., Gazal, A., Naseer, S., Khan, M. H., Ahangar, A., and Iqbal, A. M. (2021). Breeding maize for food and nutritional security. *Cereal grains. London: IntechOpen*, 39-54.
- Lone, A. A., Khan, M. H., Dar, Z. A., and Wani, S. H. (2018). Breeding strategies for improving growth and yield under waterlogging conditions in maize: a review. *Maydica* **61**, 11.
- Lupini, A., Sorgona, A., Princi, M. P., Sunseri, F., and Abenavoli, M. R. (2016). Morphological and physiological effects of trans-cinnamic acid and its hydroxylated derivatives on maize root types. *Plant Growth Regulation* **78**, 263-273.
- Lynch, J. P. (2013). Steep, cheap and deep: an ideotype to optimize water and N acquisition by maize root systems. *Annals of botany* **112**, 347-357.
- Majid, M. U., Awan, M. F., Fatima, K., Tahir, M. S., Ali, Q., Rashid, B., Rao, A. Q., Nasir, I. A., and Husnain, T. (2017). Genetic resources of chili pepper (*Capsicum annum* L.) against *Phytophthora capsici* and their induction through various biotic and abiotic factors. *Cytology and Genetics* **51**, 296-304.
- Mandal, S., Singh, V. K., Chaudhary, D., Kaur, A., Kumar, R., Panwar, A., Ojre, A., Singh, R. K., and Kaushik, P. (2023). From Grain to Gain: Revolutionizing Maize Nutrition.

- Mangani, R., Tesfamariam, E. H., Bellocchi, G., and Hassen, A. (2018). Growth, development, leaf gaseous exchange, and grain yield response of maize cultivars to drought and flooding stress. *Sustainability* **10**, 3492.
- MANN, K. K. Health benefits of Maize phytochemicals. *J. Appl. Soc. Sci* **1**, 107-114.
- Miedema, P. (1982). The effects of low temperature on *Zea mays*. *Advances in agronomy* **35**, 93-128.
- Mohapatra, S., Ray, R. C., and Ramachandran, S. (2019). Bioethanol from biorenewable feedstocks: technology, economics, and challenges. In "Bioethanol production from food crops", pp. 3-27. Elsevier.
- Moharramnejad, S., Sofalian, O., Valizadeh, M., Asgari, A., and Shiri, M. (2015). Proline, glycine betaine, total phenolics and pigment contents in response to osmotic stress in maize seedlings. *Journal of bioscience & Biotechnology* **4**.
- Moriondo, M., Giannakopoulos, C., and Bindi, M. (2011). Climate change impact assessment: the role of climate extremes in crop yield simulation. *Climatic change* **104**, 679-701.
- Mosa, K. A., Ismail, A., and Helmy, M. (2017). Introduction to plant stresses. *Plant Stress Tolerance: An Integrated Omics Approach*, 1-19.
- Mueller, N. D., Gerber, J. S., Johnston, M., Ray, D. K., Ramankutty, N., and Foley, J. A. (2012). Closing yield gaps through nutrient and water management. *Nature* **490**, 254-257.
- Muhammad Aslam, M., Waseem, M., Jakada, B. H., Okal, E. J., Lei, Z., Saqib, H. S. A., Yuan, W., Xu, W., and Zhang, Q. (2022). Mechanisms of abscisic acid-mediated drought stress responses in plants. *International journal of molecular sciences* **23**, 1084.
- Naveed, M. T., Qurban, A., Muhammad, A., and Babar, H. (2012). Correlation and path coefficient analysis for various quantitative traits in chickpea (*Cicer arietinum* L.). *International Journal for Agro Veterinary and Medical Sciences (IJAVMS)* **6**, 97-106.
- Ong, C., and Baker, C. (1985). Temperature and leaf growth. *Control of leaf growth*, 175-200.
- Panda, S. C. (2010). "Maize crop science," Agrobios (India).
- Pasini, L., Bruschini, S., Bertoli, A., Mazza, R., Fracheboud, Y., and Marocco, A. (2005). Photosynthetic performance of cold-sensitive mutants of maize at low temperature. *Physiologia Plantarum* **124**, 362-370.
- Peñuelas, J., and Staudt, M. (2010). BVOCs and global change. *Trends in plant science* **15**, 133-144.
- Potters, G., Pasternak, T. P., Guisez, Y., Palme, K. J., and Jansen, M. A. (2007). Stress-induced morphogenic responses: growing out of trouble? *Trends in plant science* **12**, 98-105.
- Prasad, T. K. (1996). Mechanisms of chilling-induced oxidative stress injury and tolerance in developing maize seedlings: changes in antioxidant system, oxidation of proteins and lipids, and protease activities. *The Plant Journal* **10**, 1017-1026.
- Prasanna, B. (2016). Developing and deploying abiotic stress-tolerant maize varieties in the tropics: challenges and opportunities. *Molecular Breeding for Sustainable Crop Improvement: Volume 2*, 61-77.
- Rahman, M. H. (2016). Exploring sustainability to feed the world in 2050. *Journal of Food Microbiology* **1**.
- Rajasheker, G., Jawahar, G., Jalaja, N., Kumar, S. A., Kumari, P. H., Punita, D. L., Karumanchi, A. R., Reddy, P. S., Rathnagiri, P., and Sreenivasulu, N. (2019). Role and regulation of osmolytes and ABA interaction in salt and drought stress tolerance. In "Plant signaling molecules", pp. 417-436. Elsevier.
- Ramazan, S., Nazir, I., Yousuf, W., and John, R. (2022). Environmental stress tolerance in maize (*Zea mays*): role of polyamine metabolism. *Functional Plant Biology* **50**, 85-96.
- Ren, B., Zhang, J., Li, X., Fan, X., Dong, S., Liu, P., and Zhao, B. (2014). Effects of waterlogging on the yield and growth of summer maize under field conditions. *Canadian Journal of plant science* **94**, 23-31.
- Rouf Shah, T., Prasad, K., and Kumar, P. (2016). Maize—A potential source of human nutrition and health: A review. *Cogent Food & Agriculture* **2**, 1166995.
- Rubio, G., Sorgona, A., and Lynch, J. P. (2004). Spatial mapping of phosphorus influx in bean root systems using digital autoradiography. *Journal of experimental botany* **55**, 2269-2280.
- Saeed, M. S., and Saeed, A. (2020). Health benefits of maize crop-an overview. *Curr Res Agric Farming* **1**, 5-8.
- Salika, R., and Riffat, J. (2021). Abiotic stress responses in maize: a review. *Acta Physiologiae Plantarum* **43**, 130.
- Sánchez, B., Rasmussen, A., and Porter, J. R. (2014). Temperatures and the growth and development of maize and rice: a review. *Global change biology* **20**, 408-417.
- Sarwar, M., Anjum, S., Alam, M. W., Ali, Q., Ayyub, C., Haider, M. S., Ashraf, M. I., and Mahboob, W. (2022). Triacanthol regulates morphological traits and enzymatic activities of salinity affected hot pepper plants. *Scientific Reports* **12**, 1-8.
- Sarwar, M., Anjum, S., Ali, Q., Alam, M. W., Haider, M. S., and Mehboob, W. (2021). Triacanthol modulates salt stress tolerance in cucumber by altering the physiological and biochemical status of plant cells. *Scientific reports* **11**, 1-10.

- Searchinger, T., Hanson, C., Ranganathan, J., Lipinski, B., Waite, R., Winterbottom, R., Dinshaw, A., Heimlich, R., Boval, M., and Chemineau, P. (2014). "Creating a sustainable food future. A menu of solutions to sustainably feed more than 9 billion people by 2050. World resources report 2013-14: interim findings," World Resources Institute (WRI); World Bank Groupe-Banque Mondiale; United
- Serna-Saldivar, S. O., Gutiérrez-Urbe, J. A., and García-Lara, S. (2015). Phytochemical profiles and nutraceutical properties of corn and wheat tortillas. In "Tortillas", pp. 65-96. Elsevier.
- Slama, I., Abdelly, C., Bouchereau, A., Flowers, T., and Savaure, A. (2015). Diversity, distribution and roles of osmoprotective compounds accumulated in halophytes under abiotic stress. *Annals of botany* **115**, 433-447.
- Sravani, D., Guddeti, M., and Rajanikanth, E. (2021). Boquet Ears in Maize. *Biotica Researh Today* **3**, 70-71.
- Srivastava, J. P., Singh, P., Singh, V. P., and Bansal, R. (2010). Effect of waterlogging on carbon exchange rate, stomatal conductance and mineral nutrient status in maize and pigeonpea. *Plant Stress* **4**, 94-99.
- Sunoj, V. J., Shroyer, K. J., Jagadish, S. K., and Prasad, P. V. (2016). Diurnal temperature amplitude alters physiological and growth response of maize (*Zea mays* L.) during the vegetative stage. *Environmental and Experimental Botany* **130**, 113-121.
- Suzuki, N., Rivero, R. M., Shulaev, V., Blumwald, E., and Mittler, R. (2014). Abiotic and biotic stress combinations. *New Phytologist* **203**, 32-43.
- Tahjib-Ul-Arif, M., Siddiqui, M. N., Sohag, A. A. M., Sakil, M. A., Rahman, M. M., Polash, M. A. S., Mostofa, M. G., and Tran, L.-S. P. (2018). Salicylic acid-mediated enhancement of photosynthesis attributes and antioxidant capacity contributes to yield improvement of maize plants under salt stress. *Journal of plant growth regulation* **37**, 1318-1330.
- Tankem, T., Ngwasiri, P. N., Ambindei, W. A., Wingang, M. C., Ngwabie, N. M., Ngassoum, M. B., and Aba, E. R. (2023). Production and Evaluation of the Nutritional and Functional Qualities of "Adakwa" Enriched with Waste Biomass of Traditional Brewer's Spent Grain as a Functional Staple Food. *Advances in Chemical Engineering and Science* **13**, 265-288.
- Thakur, P., Kumar, S., Malik, J. A., Berger, J. D., and Nayyar, H. (2010). Cold stress effects on reproductive development in grain crops: an overview. *Environmental and Experimental Botany* **67**, 429-443.
- Tiwari, Y. K., and Yadav, S. K. (2019). High temperature stress tolerance in maize (*Zea mays* L.): Physiological and molecular mechanisms. *Journal of Plant Biology* **62**, 93-102.
- Ujong, A. E., Aniefiok, I. E., and Onyekwe, J. C. (2023). Nutrient Composition and Sensory Properties of Breakfast Cereal Made from Yellow Maize and Enriched with Soybean and Groundnut Flours. *Turkish Journal of Agriculture-Food Science and Technology* **11**, 651-656.
- Vaughan, M. M., Block, A., Christensen, S. A., Allen, L. H., and Schmelz, E. A. (2018). The effects of climate change associated abiotic stresses on maize phytochemical defenses. *Phytochemistry Reviews* **17**, 37-49.
- Vaughan, M. M., Christensen, S., Schmelz, E. A., Huffaker, A., Mcauslane, H. J., Alborn, H. T., Romero, M., Allen, L. H., and Teal, P. E. (2015). Accumulation of terpenoid phytoalexins in maize roots is associated with drought tolerance. *Plant, cell & environment* **38**, 2195-2207.
- Vaughan, M. M., Huffaker, A., Schmelz, E. A., Dafeo, N. J., Christensen, S. A., McAuslane, H. J., Alborn, H. T., Allen, L. H., and Teal, P. E. (2016). Interactive effects of elevated [CO₂] and drought on the maize phytochemical defense response against mycotoxigenic *Fusarium verticillioides*. *PloS one* **11**, e0159270.
- Venkateswarlu, B., and Shanker, A. K. (2011). Dryland agriculture: bringing resilience to crop production under changing climate. In "Crop stress and its management: Perspectives and strategies", pp. 19-44. Springer.
- Vescio, R., Abenavoli, M. R., and Sorgonà, A. (2020). Single and combined abiotic stress in maize root morphology. *Plants* **10**, 5.
- Vinocur, B., and Altman, A. (2005). Recent advances in engineering plant tolerance to abiotic stress: achievements and limitations. *Current opinion in biotechnology* **16**, 123-132.
- Wang, Y., Sheng, D., Zhang, P., Dong, X., Yan, Y., Hou, X., Wang, P., and Huang, S. (2021). High temperature sensitivity of kernel formation in different short periods around silking in maize. *Environmental and Experimental Botany* **183**, 104343.
- Wani, A. B., Chadar, H., Wani, A. H., Singh, S., and Upadhyay, N. (2017). Salicylic acid to decrease plant stress. *Environmental Chemistry Letters* **15**, 101-123.
- Wheeler, T., and Von Braun, J. (2013). Climate change impacts on global food security. *Science* **341**, 508-513.
- Wijewardana, C., Henry, W. B., Hock, M. W., and Reddy, K. R. (2016). Growth and physiological trait variation among corn hybrids for cold tolerance. *Canadian Journal of plant science* **96**, 639-656.
- Xiao, J., and Bai, W. (2019). Bioactive phytochemicals. *Critical Reviews in Food Science and Nutrition* **59**, 827-829.

- Xu, H., Twine, T. E., and Girvetz, E. (2016). Climate change and maize yield in Iowa. *PLoS one* **11**, e0156083.
- Zabed, H., Sahu, J., Suely, A., Boyce, A., and Faruq, G. (2017). Bioethanol production from renewable sources: Current perspectives and technological progress. *Renewable and Sustainable Energy Reviews* **71**, 475-501.
- Zhan, A., Schneider, H., and Lynch, J. P. (2015). Reduced lateral root branching density improves drought tolerance in maize. *Plant physiology* **168**, 1603-1615.
- Zhao, C., Liu, B., Piao, S., Wang, X., Lobell, D. B., Huang, Y., Huang, M., Yao, Y., Bassu, S., and Ciais, P. (2017). Temperature increase reduces global yields of major crops in four independent estimates. *Proceedings of the National Academy of sciences* **114**, 9326-9331.
- Zubair, M., Shakir, M., Ali, Q., Rani, N., Fatima, N., Farooq, S., Shafiq, S., Kanwal, N., Ali, F., and Nasir, I. A. (2016). Rhizobacteria and phytoremediation of heavy metals. *Environmental Technology Reviews* **5**, 112-119.



Open Access This article is licensed under a Creative Commons Attribution 4.0 International License, [Creative Commons Attribution-NonCommercial 4.0 International License](https://creativecommons.org/licenses/by-nc/4.0/). © The Author(s) 2023

- Zulfiqar, F., Akram, N. A., and Ashraf, M. (2020). Osmoprotection in plants under abiotic stresses: New insights into a classical phenomenon. *Planta* **251**, 1-17.

Declarations

Data Availability statement

All data generated or analyzed during the study are included in the manuscript.

Ethics approval and consent to participate

Not applicable

Consent for publication

Not applicable

Funding

Not applicable

Conflict of Interest

Regarding conflicts of interest, the authors state that their research was carried out independently without any affiliations or financial ties that could raise concerns about biases.